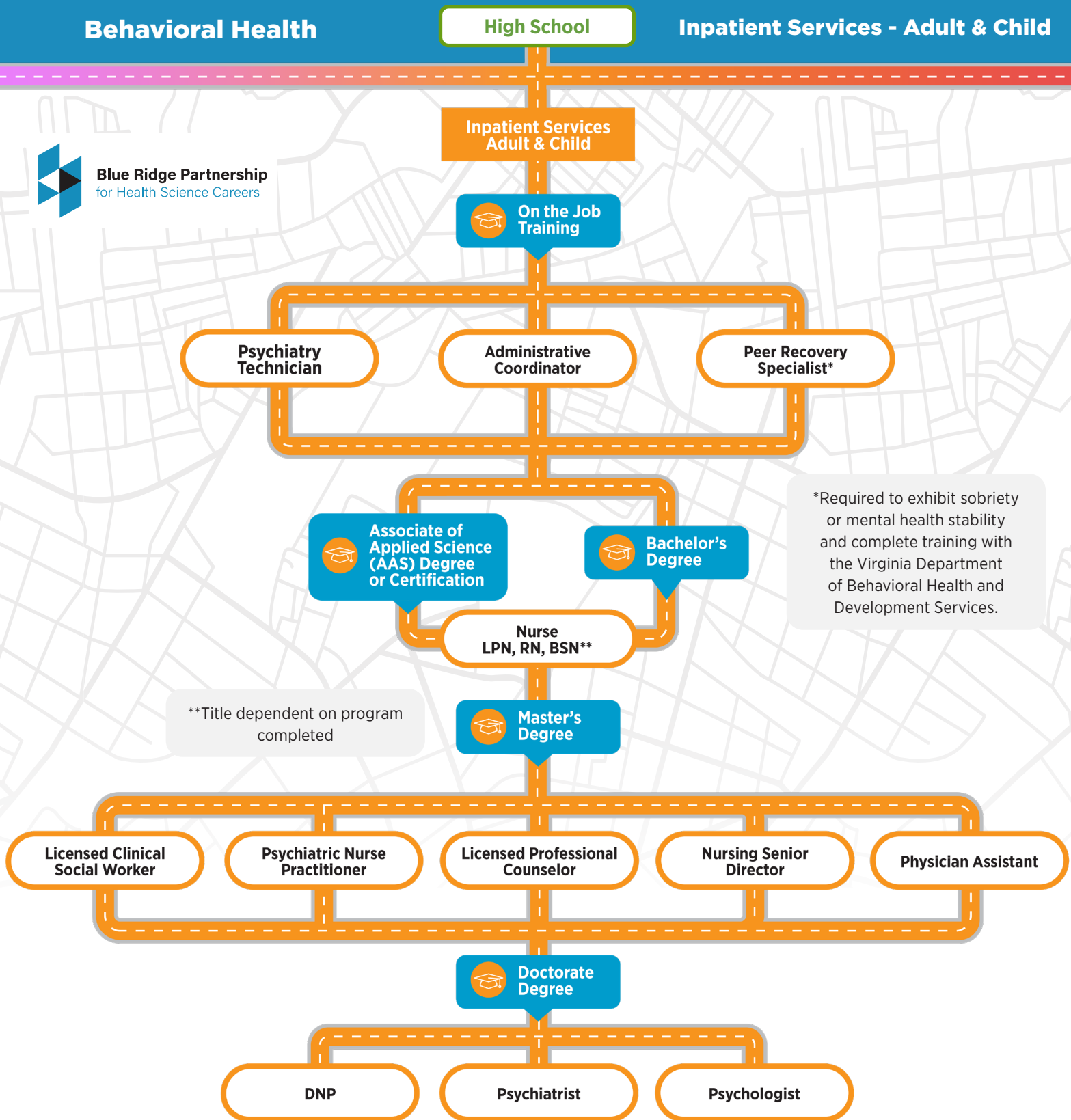




**Blue Ridge Partnership**  
for Health Science Careers



This map is page 1 of the behavioral health job cluster. In the field of behavioral health, there are multiple different specialties.

**Inpatient Services  
Adult & Child**

**Outpatient Services  
Adult & Child**

**Consult Services**

**Emergency Psychiatry  
Services**



= Certification Required



= Education Required



= Fee Payment Required

Reach out to a counselor at your high school, local community college, or four-year college or university. For more information, visit: [virginiahealthcareers.org](http://virginiahealthcareers.org)

\*Required to exhibit sobriety or mental health stability and complete training with the Virginia Department of Behavioral Health and Development Services.



### Outpatient Services Adult & Child

On the Job  
Training

Peer Recovery  
Specialist\*

Healthcare  
Administrative Assistant

Administrative  
Coordinator

Administrative  
Coordinator

Associate of  
Applied Science  
(AAS) Degree  
or Certification

Bachelor's  
Degree

Nurse  
LPN, RN, BSN\*\*

Qualified Mental  
Health Professional

Case Manager

Intake Coordinator

Master's  
Degree

Licensed Clinical  
Social Worker

Nurse Practitioner

Professional  
Counselor

Nursing Senior  
Director

Doctorate  
Degree

DNP

Psychologist

Psychiatrist

\*\*Title dependent  
on program  
completed

This map is page 2 of the behavioral health job cluster. In the field of behavioral health, there are multiple different specialties.

Inpatient Services  
Adult & Child

Outpatient Services  
Adult & Child

Consult Services

Emergency Psychiatry  
Services



= Certification Required



= Education Required



= Fee Payment Required

Reach out to a counselor at your high school, local community college,  
or four-year college or university. For more information, visit: [virginiahealthcareers.org](http://virginiahealthcareers.org)



**Blue Ridge Partnership**  
for Health Science Careers

**Consult Services**



**On the Job  
Training**

**Clinical Transporter**

**Patient Advocate**



**Associate of  
Applied Science  
(AAS) Degree  
or Certification**



**Bachelor's  
Degree**

**Nurse  
LPN, RN, BSN\*\***

**Discharge Planner  
(Social Work Degree)**

**Case Manager**

\*\*Title dependent on program  
completed



**Master's  
Degree**

**Licensed  
Professional Counselor**

**Nurse Practitioner**

**Physician Assistant**

**Licensed Clinical  
Social Worker**



**Doctorate  
Degree**

**DNP**

**PA**

**MD**

**Psychiatrist**

This map is page 3 of the behavioral health job cluster. In the field of behavioral health, there are multiple different specialties.

**Inpatient Services  
Adult & Child**

**Outpatient Services  
Adult & Child**

**Consult Services**

**Emergency Psychiatry  
Services**



= Certification Required



= Education Required



= Fee Payment Required

Reach out to a counselor at your high school, local community college,  
or four-year college or university. For more information, visit: [virginiahealthcareers.org](http://virginiahealthcareers.org)



**Blue Ridge Partnership**  
for Health Science Careers

**Emergency  
Psychiatry Services**



**On the Job  
Training**

**Psychiatry Technician**

**Administrative  
Coordinator**



**Associate of  
Applied Science  
(AAS) Degree  
or Certification**



**Bachelor's  
Degree**

**Nurse  
LPN, RN, BSN\*\***

**Qualified Mental  
Health Professional**

\*\*Title dependent on program  
completed



**Master's  
Degree**

**Licensed Clinical  
Social Worker**

**Nurse Practitioner**

**Licensed Professional  
Counselor**

**Nursing Senior  
Director**



**Doctorate  
Degree**

**DNP**

**Psychologist**

**Psychiatrist**

This map is page 4 of the behavioral health job cluster. In the field of behavioral health, there are multiple different specialties.

**Inpatient Services  
Adult & Child**

**Outpatient Services  
Adult & Child**

**Consult Services**

**Emergency Psychiatry  
Services**



= Certification Required



= Education Required



= Fee Payment Required

Reach out to a counselor at your high school, local community college,  
or four-year college or university. For more information, visit: [virginiahealthcareers.org](http://virginiahealthcareers.org)