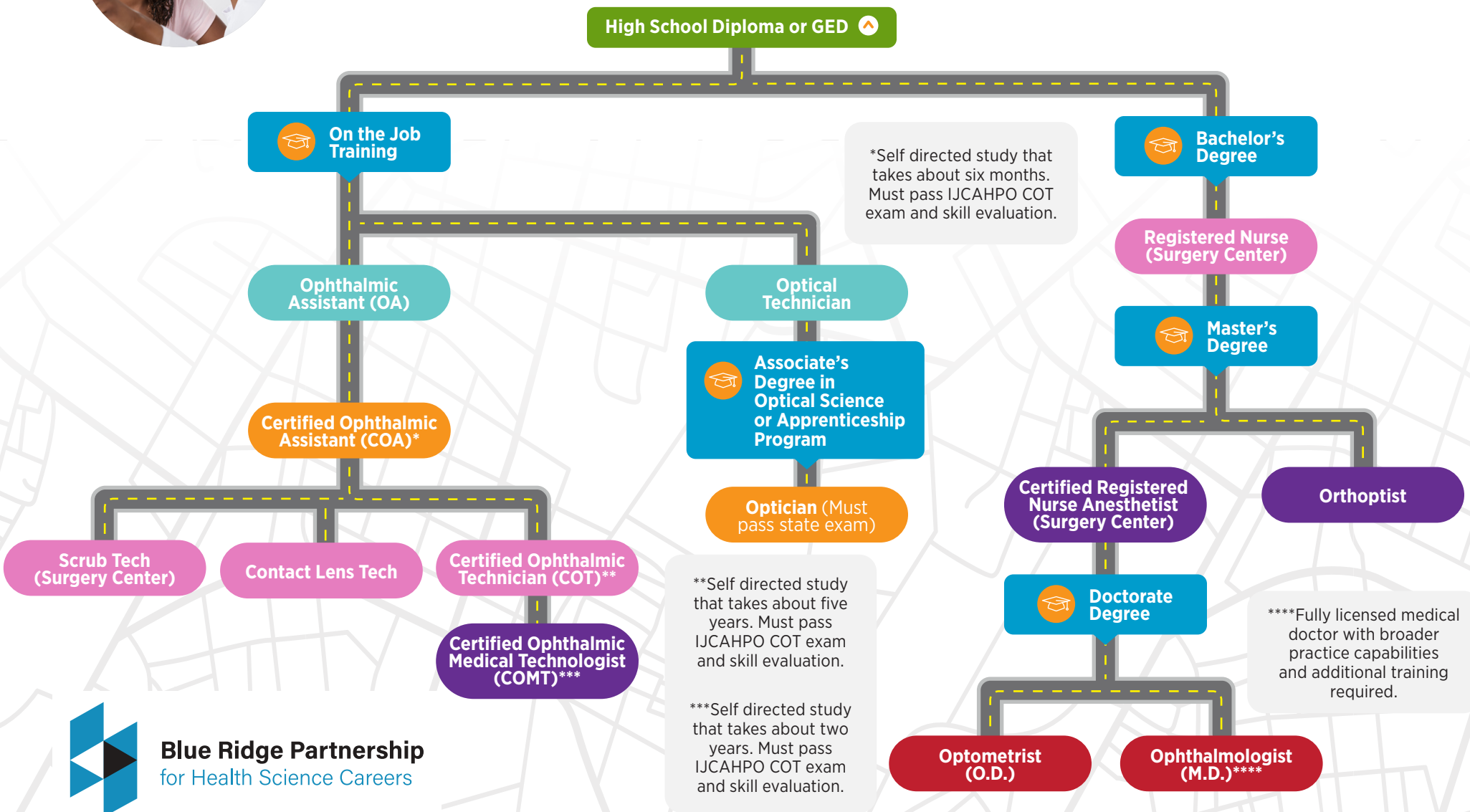




Start Your Career Path in Eye Care

Professionals in the field of eye care help people manage eye health and vision. Vision care ranges from vision testing and correction to the diagnosis, treatment and management of vision issues. Eye health focuses on managing eye diseases, disorders, and injuries. With technological advances and an aging population, the need for eye care specialists continues to rise. Remember, no career path is the same. For the most up-to-date information, contact the school or business.



Blue Ridge Partnership
for Health Science Careers



= Certification Required



= Education Required



= Fee Payment Required

Reach out to a counselor at your highschool, local community college, or four-year college or university. For more information, visit: virginiahealthcareers.org

Starting your eye care career journey in high school?

Visit virginiahealthcareers.org/core-curriculum to learn more.

Ophthalmic Assistant (OA)**
Salary Range: \$39,430
On-the-Job Training
Certified Ophthalmic Assistant (COA)**
Salary Range: \$43,460
IJCAHPO COT Certification
Certified Ophthalmic Technician (COT)**
Salary Range: \$48,500
IJCAHPO COT Certification
Certified Ophthalmic Medical Technologist (COMT)**
Salary Range: \$53,500
IJCAHPO COT Certification
Scrub Tech**
Salary Range: \$62,480
Certification
Virginia Western Community College
Contact Lens Tech**
Salary Range: \$48,500
Certification
Optical Tech**
Salary Range: \$33,300
On-the-Job Training
Optician**
Salary Range: \$46,500
License - Sponsored On-the-Job Training
Reynolds Community College

Registered Nurse (RN)**
Salary Range: \$93,600
License
ECPI
Galen College of Nursing
Virginia Western Community College
Radford
Roanoke Higher Education Center
Certified Registered Nurse Assistant (CRNA)**
Salary Range: \$132,850
License
Roanoke Higher Education Center
Virginia Commonwealth University
Old Dominion University
Orthoptist**
Salary Range: \$95,410
License
Duke University
University of Miami
Vanderbilt University
Optometrist**
Salary Range: \$134,830
Doctorate Degree
Southern College of Optometry
University of Pikeville
University of Alabama
Ophthalmologist**
Salary Range: \$239,200
Doctorate Degree

*Admissions process required.

**For the most up-to-date information, contact the school or business.



SCAN ME

Degrees & Certificates Guide

AS - An Associate of Science degree is a two-year degree that combines general coursework with major-specific classes.

AAS - An Associate of Applied Science degree is a two-year college degree that focuses on a specific technical skill of applied science.

Certificate - A certificate of study is a postsecondary credential that shows completed practical training and gained skills in a specific field and carries credit.

Career Studies Certificate - A careers studies program is a short-term program that improves job skills (12-18 academic credits, 15-18 months to complete).

FastForward - FastForward is a short-term workforce training program that offers industry credentials and certifications in a shorter time period (non-credit).